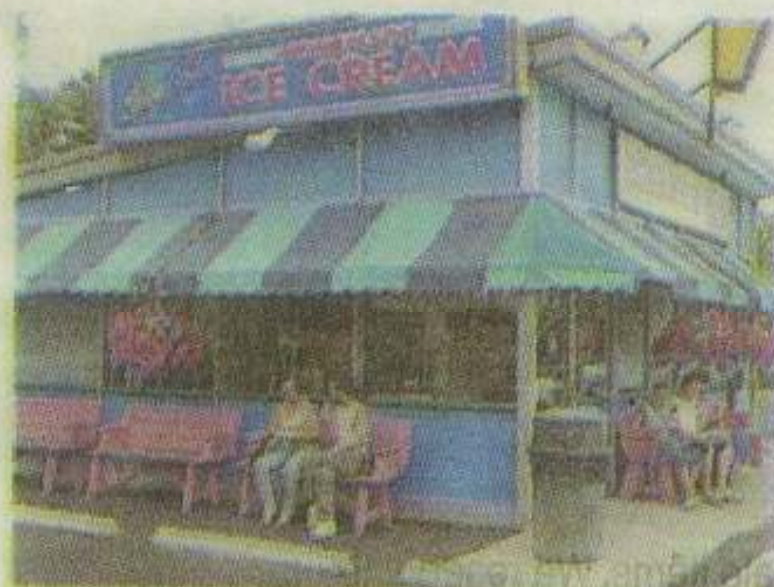


**SNOWFLAKE**

**1148 W. Main St.,  
Riverhead, 631-727-4394**

**S**tu Feldschuh is the mad professor of ice cream, obsessively tinkering with minute proportions and seemingly identical ingredients to achieve the perfect flavor. Last year, he experimented until he settled on an ice cream blended with peanut butter, peanut-butter cups and chocolate crunch. For his banana-split ice cream, he punctuates banana ice cream (made with actual ripe bananas) with walnuts and two types of cherries, dark Bordeaux and maraschinos. He is excited about peach ice cream, made with peaches from nearby Briermere Farms. And, of course, there's his iconic, unholy specialty, Peconic swamp thing, made with chocolate ice cream, fudge and brownies with ribbons of raspberry puree.



NEWSDAY PHOTO, 2005 / KEN SPENCER

**Snowflake in Riverhead**